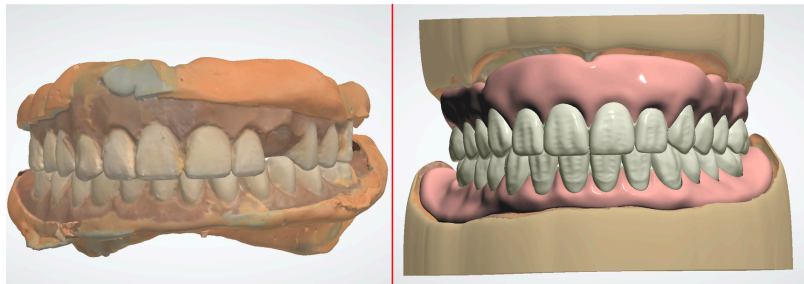




GPS  
DIGITAL DENTAL LAB

## Reference Denture

A Reference Denture is an existing denture that is worn by the patient to be used as a template for fabricating a newly designed prosthesis.



- Full intaglio, borders, and tooth facial scan
- No holes or missing data, scan quality must be flawless
- Can take a wash impression to improve fit
- Notation of discrepancies or changes (midline correction, increase/decrease tooth length)
- Bite scan and opposing scan required
- Can be fabricated with your choice of tooth and acrylic shade



Scan for instructional videos!

  
More Info Over

3501 Parkway Center Ct. Orlando FL 32808 | 407.447.4250 | [www.gpsdental.com](http://www.gpsdental.com)