

# GPS

DIGITAL DENTAL LAB



## **Digital Dentures Unveiled:** Digital Denture Workflows and Solutions

# **Vivid Digital Dentures:**

## **Precision & Quality for Every Need.**



At **GPS Digital Dental Lab**, we understand that every patient has unique needs, which is why we offer three levels of digital dentures—VIVID Economy, VIVID Premium, and VIVID Ultra. Each option is designed to provide the perfect balance of quality, aesthetics, and affordability. Whether your patient needs a cost-effective solution or the highest level of customization and durability, our VIVID line has you covered. On the next pages, we'll take a closer look at each option, highlighting their features, benefits, and ideal use cases.

# Try in Prototype

## Printed Digital Denture Try-In: Description & Usage Guide

### What is a Printed Digital Denture Try-In?

A printed digital denture try-in is a 3D-printed prototype of the final denture. It allows the clinician to evaluate the fit, function, esthetics, and occlusion before proceeding with the final fabrication.

### How to Use a Printed Digital Denture Try-In

#### 1. Initial Evaluation

- ▶ Place the try-in in the patient's mouth and assess the overall fit on the ridge.
- ▶ Check for any pressure points or areas requiring adjustment.
- ▶ If the fit needs improvement, take a wash impression using the try-in.

#### 2. Esthetic Assessment

- ▶ Evaluate midline alignment, smile line, lip support, and overall appearance.
- ▶ Confirm patient satisfaction with tooth size, shape, and shade.
- ▶ If changes are needed, mark the midline and lip line inside the mouth using a black Sharpie.

#### 3. Functional Testing

- ▶ Have the patient speak and perform various jaw movements to assess phonetics and function.
- ▶ Evaluate occlusion, ensuring proper contact in centric and lateral movements.

#### 4. Adjustments & Modifications

- ▶ Make minor adjustments on the try-in or record digital notes.
- ▶ For significant changes, a new try-in may be necessary. Take a new blue moose bite and send it to the lab for modifications.

#### 5. Final Approval & Proceeding to Fabrication

- ▶ Once the patient and clinician approve the fit and esthetics, the final denture is milled or printed based on the validated try-in.

# VIVID

## DIGITAL DENTURE ECONOMY



### Key Features:

#### ► 3D-Printed Lucitone Digital Print Base:

- Fabricated using **Lucitone Digital Print**, a high-performance, FDA-approved resin known for its exceptional strength, durability, and biocompatibility.
- Ensures a **lightweight yet resilient** base that resists fractures and wear over time.
- Provides **enhanced comfort** by adapting precisely to the patient's oral anatomy for a more secure fit.

#### ► Bridged Multi-Layer Milled Teeth:

- Crafted from **high-quality, multi-layered PMMA (Polymethyl Methacrylate)**, offering natural translucency and lifelike shading.
- **Bridged design** increases overall strength and stability, reducing the risk of teeth dislodging or chipping.
- Optimized occlusion and articulation for improved **chewing efficiency and bite function**.

The VIVID Digital Denture Economy is ideal for patients who require a **functional, aesthetically pleasing, and cost-efficient** denture solution backed by the advantages of digital fabrication technology.

# VIVID

## DIGITAL DENTURE PREMIUM



### Key Features:

#### ► 3D-Printed Lucitone Digital Print Base:

- Made from **Lucitone Digital Print**, a premium, FDA-approved material known for its **exceptional strength, fracture resistance, and long-term durability**.
- Provides a **comfortable, secure fit** due to the precision of digital design, reducing chairside adjustments.
- **Lightweight yet durable**, ensuring patients experience optimal comfort throughout the day.

#### ► Premium Bridged Multi-Layer Milled Teeth from Harvest Dental:

- Manufactured using **Harvest Dental's high-end, multi-layered PMMA material**, known for its **superior esthetics, translucency, and natural shading**.
- Features **13 distinct layers**, mimicking the depth and realism of natural enamel.
- **Double Cross Link (DCL) Technology** enhances strength and wear resistance, making it more durable than conventional acrylic teeth.
- **Bridged tooth structure** improves overall stability, minimizing the risk of fractures or dislodgement.

The VIVID Digital Denture Premium is the **perfect balance between affordability and high-end quality**, making it an **ideal choice for patients who desire enhanced esthetics and long-term durability without stepping into the ultra-premium range**.



# VIVID

## DIGITAL DENTURE ULTRA



### Key Features:

#### ► Milled Lucitone Base for Maximum Strength:

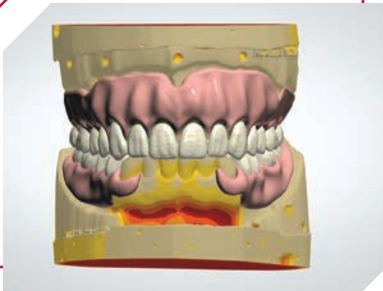
- Unlike 3D-printed bases, the **Lucitone Digital Milled base** is precision milled from a solid block, resulting in an **exceptionally strong, fracture-resistant foundation**.
- **Zero porosity** ensures greater longevity and resistance to breakage compared to traditional acrylic bases.
- Digital milling allows for **unmatched accuracy and fit**, reducing the need for chairside adjustments.

#### ► Premium Bridged Multi-Layer Milled Teeth from Harvest Dental:

- Crafted using **13-layer, high-translucency PMMA**, closely mimicking the depth and shading of natural teeth.
- **Double Cross Link (DCL) Technology** enhances wear resistance and prevents premature deterioration.
- The **bridged structure** strengthens the bond between teeth and the base, reducing the risk of fractures or detachment.

The **VIVID Digital Denture ULTRA** is the **gold standard in digital dentures**, ideal for patients who want the **best possible combination of strength, function, and esthetics**. It's designed for those who refuse to compromise on quality and desire a **truly bespoke dental restoration**.

DIGITAL  
DESIGN



PRINTED TRY  
IN PROTOTYPE



FINISHED  
PROTOTYPE



PROTOTYPE  
ADJUSTMENT  
IF NEEDED



DIGITAL  
MATERIALS



PRINTED  
LUCITONE BASES

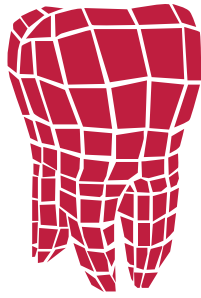


MILLED  
TEETH AND  
DENTURE  
BASE



PARTS AFTER  
MANUFACTURING





# GPS

DIGITAL DENTAL LAB

VIVID DIGITAL DENTURE  
ECONOMY

VIVID DIGITAL DENTURE  
PREMIUM

VIVID DIGITAL DENTURE  
ULTRA

## VIVID Digital Dentures

### Precision, Esthetics & Speed

At GPS Digital Dental Lab, we are proud to introduce **VIVID Digital Dentures**, combining cutting-edge 3D printing and precision milling to deliver superior fit, function, and esthetics. Our digital workflow ensures **exceptional accuracy**, reducing chairside adjustments and enhancing patient comfort.

### Why Choose VIVID Digital Dentures?

- ✓ **Perfect Fit & Function** – Digitally designed for precision and comfort.
- ✓ **Stunning Esthetics** – Multi-layered materials create a natural, lifelike look.
- ✓ **Unmatched Strength** – Durable, high-performance materials ensure longevity.
- ✓ **Faster Turnaround** – Digital fabrication speeds up case completion.
- ✓ **Consistency & Reproducibility** – Digital records simplify future remakes.

With VIVID Economy, Premium, and ULTRA, you can provide **high-quality restorations** with remarkable efficiency and aesthetics.

Upgrade your denture solutions today! Contact us to get started!